

OCTOPUS CLAN
NIGERIA LIMITED



COMPANY PROFILE



CONTENT

THE COMPANY AT A GLANCE	-	ii
INTRODUCTION	-	1
COMPANY STRUCTURE	-	2
TECHNICAL PARTNERSHIP	-	3
ORGANIZATIONAL CHART	-	4
BOARD	-	5
COMPANY - CLIENT RELATIONS/BANKERS -		6
SUMMARY OF JOBS AND SERVICES	-	7
INSURERS/QUALITY POLICY/OUR PLEDGE -		8
GALLERY	-	9 to 23

THE COMPANY AT A GLANCE

LOCATION	No7, DONAU CRESCENT, OFF AMAZON STREET, MAITAMA, ABUJA.
TOWN	FCT
STATE	ABUJA
COUNTRY	NIGERIA
TELEPHONE	+234(0)814 2999 977 +234(0)9 291 9322 0700ABJOCTOPUS, 092919322
WEBSITE	www.octopusclan-ng.com
E-MAIL	info@octopusclan-ng.com
COMPANY CLASSIFICATION	LIMITED LIABILITY
DATE OF INCORPORATION	16 TH SEPTEMBER, 1999
CERTIFICATE OF INCORPORATION	RC. 365180
NIS ISO 9001:2008CERTIFICATIONNO	0000256
DPR CERTIFICATE	R .7856/2011
VAT CERTIFICATE	PHV: 10002365180
TAX CLEARANCE	SS/RM/CT/06365180
NIGERIAN PARTICIPATION	100%
STAFF STRENGTH	150
BANKERS	ECO BANK KEYSTONE BANK STANBIC IBTC BANK FIDELITY BANK ZENITH BANK
HEAD OFFICE	
LOCATION	PLOT 349 EAGLE ISLAND PORT HARCOURT
TOWN	PORT HARCOURT
STATE	RIVERS
COUNTRY	NIGERIA
POSTAL ADDRESS	PMB 2004, FEDERAL SECRETARIAT, PORT HARCOURT, RIVERS STATE
TELEPHONE	+234 805 3604 123, +234 803 2761 945
FAX	+234 803 3130 642, 0700OCTOPUSPH 084 –886124



COMPANY STRUCTURE

OCTOPUS CLAN NIGERIA LIMITED's office is located in FCT Abuja and headquarters in Port Harcourt, Rivers State with a network of field offices and has a structure that enable efficiency and effectiveness. Jobs and services are well designed and executed in departments as follows:

Operations

Logistics, Transportation and Marine

Administration and Finance

Procurement and Supply

Research, Design and Construction

Power and Renewable Energy

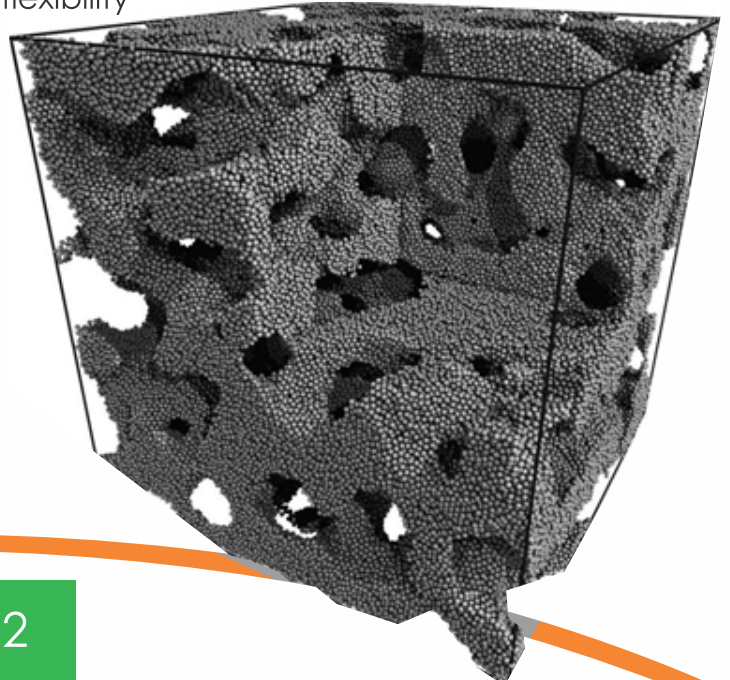
Safety and Support

Our Company structure has taken cognisance of the following consideration:

Efficiency in goal achievement

Cost effectiveness and client satisfaction

Organization control and flexibility



TECHNICAL PARTNERSHIP



OCTOPUS CLAN NIGERIA LIMITED is in technical partnership with

MICROMIX-INTERLOG
Nigeria Limited

No. 7 Donau Crescent
off Amazon Street
Maitama
Abuja-Nigeria
Tel: +234 703 554 4689

**TEC ENGINEERING COMPANY
NIGERIA LIMITED**

No. 4 Biskra street,
Wuse Zone 4, Abuja.
Tel: 07035999944
08051186766

IMPAC OIL & GAS LIMITED

No 28, Evo Road,
GRA Phase 2,
Port Harcourt,
Rivers State.
Phone: 084-233925
Fax: 084-461325

NAUTICA AFRICA

Cape Point Road,
SA Naval Dockyard,
Cape Town, South Africa.
Telephone: 0823337337,
<http://www.nauticafrica.com/>

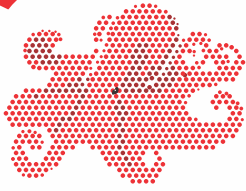


No. 7 Donau Crescent
off Amazon Street
Maitama
Abuja-Nigeria
Tel: +234 803 942 2722

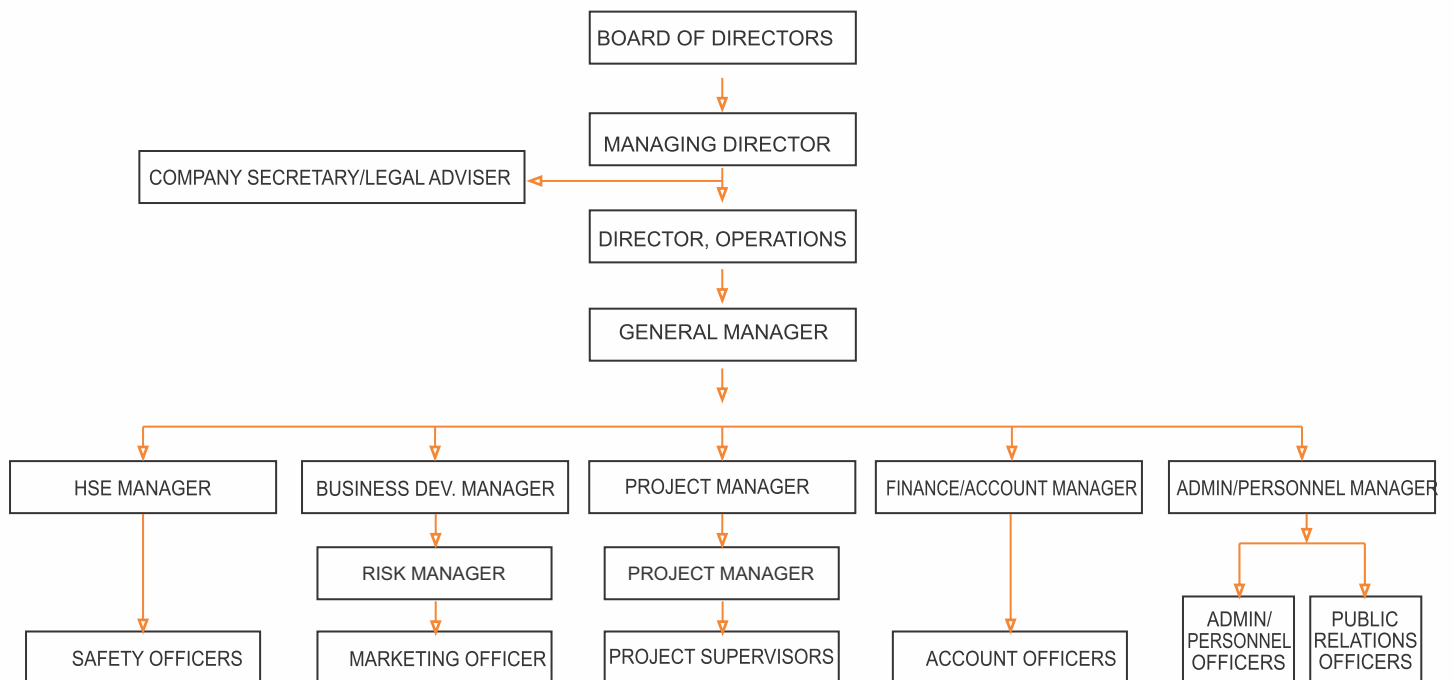


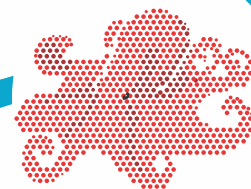
No. 9B New Isah Kaita Road
G.R.A.
Kaduna State.





ORGANIZATIONAL CHART





BOARD

OCTOPUS CLAN NIGERIA LIMITED is guided by a Board of versatile and very distinguished professionals, with wealth of experience and credibility; whose duty is to formulate the company's overall policies.

MANAGEMENT SET UP

OCTOPUS CLAN NIGERIA LIMITED is managed by a team of experienced personnel with prodigious integrity, thus providing solutions to meet our clients' needs.

STAFFING

Management team - 15

Administrative staff - 25

Others - 110





COMPANY - CLIENT RELATIONS

At OCTOPUS CLAN NIGERIA LIMITED, clients' interest is paramount in satisfying and ensuring her retainership. Our clients can engage us in one or two ways viz:

CONTRACT

By this, we can be called upon to execute jobs outrightly based on project specifications.

We undertake to supervise or monitor our projects in conformity with agreed terms of reference.

SERVICES

We also undertake consultancy and other related services.

MAJOR CLIENTELE

Nigerian Agip Oil Company Limited (NAOC)

Shell Petroleum Development Company (SPDC)

Saipem Drilling and Contracting Nigeria Limited

Deawoo Nigeria Limited

Bayelsa State Government

Niger Delta Development Commission (NDDC)

BANKERS





SUMMARY OF JOBS AND SERVICES

1. Construction, Fabrication and installation of pipe lines, flow Lines, well head platforms, hook up arms, production manifold facilities, major emergency leak repairs and sectional replacement of vandalized and corroded lines.
2. Community Relations Services
3. Construction Services
4. Rig Services
5. Crew/Security Services
6. Manpower Services
7. Equipment Lease Services
8. Build and Preserve Renewable energy, thereby reducing carbon emission and protecting the environment
9. Security Services
10. Oil Spillage Detection and Remediation Services
11. Renewable energy initiative Services
12. Drought and decertification control services

SAFETY AND QUALITY POLICY

A summary of our safety policy is to provide safe, efficient and cost-effective products and services, which conform to their specifications.

We adhere to our Total Quality Management (TQM) philosophy and run a community Affairs, Safety, Health, Environment and Security (CASHES) policy that is tailored to our clients' specifications and conforms to acceptable local and international standards (ISO 9000, BSEN etc) relevant to our specific activities.



NIGER INSURANCE PLC

We maintain a workmen's compensation scheme with NIGER INSURANCE Plc , Policy No. EA239006001978 for our workforce to shade off uncertain events and associated risks

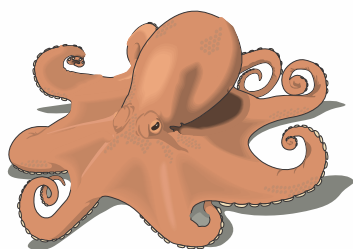
QUALITY POLICY

To provide our customers, products and services that:

- Meet their requirements,
- Conform to, or exceed their Safety, Health and Environmental Standards.

OUR PLEDGE

Alive to the fact that trust, confidence, fame and reputation are what sustain every entity, because there is something in a name, we pledge to handle clientele jobs with utmost sense of duty, conscientiousness and diligence.



GALLERY

VESSELS



M V HONOUR -24M Anti-Ballistic Crew Delivery and Patrol Vessel: Here undergoing sea trails in South African waters and would soon be sailing to Nigeria.



M V I.H PEPPLE – 24M Anti-Ballistic Crew Delivery and Patrol Vessel: Arrived in Nigeria from South Africa and is berthed at Octopus Eagle Island Jetty, Port-Harcourt.



M V OPUTUKPA – 34M Fast Crew and Utility Vessel: In Nigeria waters currently working for Nigeria Agip oil Company.



TUG BOATS



MV EUCHARIA



MV BLESSING



MV BIO

TUG BOATS



MV RACHAEL



MV AMAKIRI



M.V. AYE



SELF PROPELLED/HOUSEBOAT



SELF PROPELLED /HOUSEBOAT

MV DAMBO - A 60 MAN
HOUSEBOAT CURRENTLY
WORKING FOR NAOC



BARGES



SOME OF OCTOPUS **BARGES** BERTHED
AT OUR PORT-HARCORUT JETTY





PIPE LINE

We engage in construction, fabrication and installation of pipelines, flow lines, well head Platforms, hook up arms, production manifold facilities, major emergency leak repairs and Sectional replacement of vandalized and corroded lines.



Installation of fabricated well head platform for Santa Babara well 12 Shell Project.



Installation of riser at production manifold for Nembe 3 flow station-Shell project.



Fitting and tack welding of 6" line in readiness for Full butt of 6" inches Nembe South E and F-32km Project for Nigeria Agip Oil Company Limited.



Preparation and welding of 18" Tebidaba brass line for Nigeria Agip Oil Company.



Radiography operations of welded 6" Ogboinbiri to Tebidaba 39km pipeline project for Nigeria Agip Oil Company Limited.



Leak repair by clamping of 18" Tebidaba brass line for Nigeria Agip Oil Company.

MAINTENANCE AND FABRICATION SERVICES



Welding operation for 6" Osiama line-15km
Executed for Nigeria Agip Oil company.



Welding activities in the workshop.



Piling fabrication and installation of Osiama
Production manifold executed for Nigeria
Agip Oil Company.



Flushing of completed line in readiness for pressure
Testing of 6" line Azazuama to Tebidaba-32km
Project executed for Nigeria Agip Oil Company.



Workshop fabrication of spools executed for Shell.



Laying and welding operation for Nembe
4 well 4-Shell.



PIPE LINE



Excavation of ROW for installation of pipeline for Santa Barbara Shell project



Flushing of complete 4" line 6 Nembe 3-Shell project



Welding and pulling of 6" line for Tebidaba well 14" On a lay Barge-Nigeria Agip Oil Company Limited.



Installation of 6" riser for Tebidaba well for 14 Nigeria Agip Oil Company Limited.

DREDGING FACILITIES





VARIOUS EQUIPMENT



OCTOPUS CLAN



VARIOUS EQUIPMENT





VARIOUS EQUIPMENT



VARIOUS EQUIPMENT



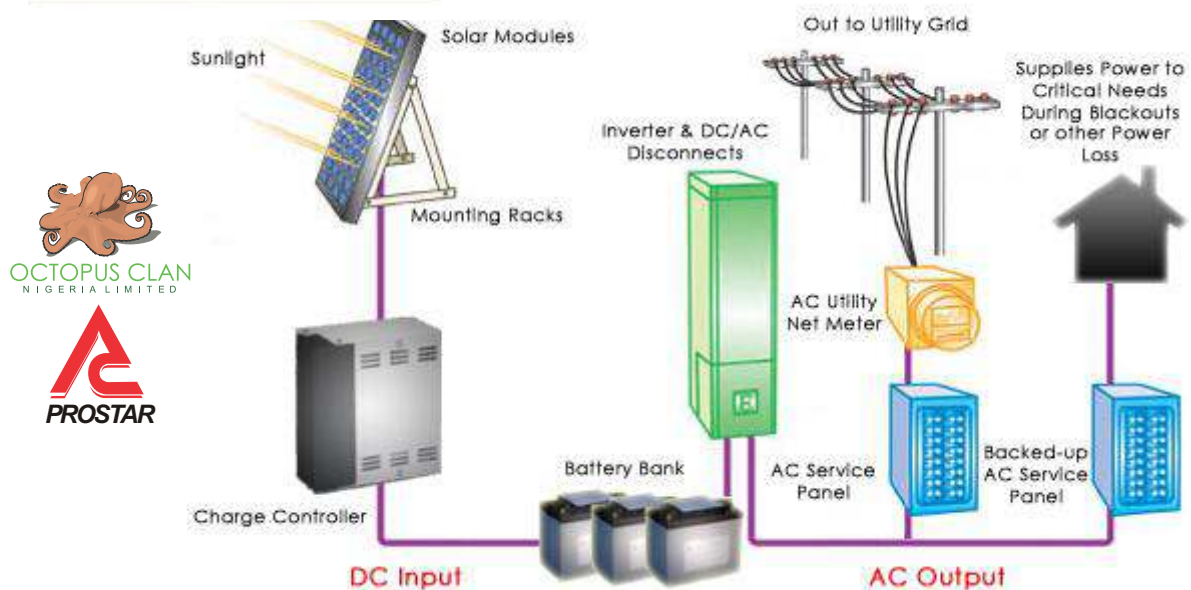
POWER GENERATION



In association with highly skilled local and international technical partners, including Prostar, 3D HiTech Systems Limited, GE and Siemens Octopus Clan is developing conventional and renewable power projects in northern and middle belt Nigeria. These projects will have significant impact on the socio-economic development of northern Nigeria and contribute significantly to the least cost development of Nigeria's electric power system.

We are also partnering with notable local and international contractor to execute the civil and electrical works, thus localising critical technical skills.

SOLAR POWER BACK-UP SYSTEM



Instant Power Supply (IPS) is the complete stand-alone solar electric system designed for industrial / telecom applications. These systems are shipped as complete, easy to assemble systems, and they dramatically decrease the cost of installation. You Just need to mount the solar modules enclosed and connect them with the included wiring. For off-grid sites, IPS 12 and 24-volt DC systems are the ideal power solution for any number of applications, including:

- Rural habitation
- Railroad signaling
- Irrigation control
- Security systems
- Wireless data
- Navigational aids
- Flow monitoring
- UHF/VHF radio links
- and more...
- Lighting
- Tower beacons



POWER GENERATION



Large Solar PV Projects



33kV Electrical Maintenance, Landscaping & Panel cleaning Solar O&M



SUB STATIONS



GAS TURBINE POWER PLANTS



Technical Partner on Power Generation



POWER GENERATION

WIND ENERGY

Working daily on the success of our customers, our common goal is the optimization of your wind turbine efficiency. We pursue that gradually - from the planning phase to the commissioning. Naturally we are also present for you during the entire period of operation of your wind turbines.

Successful wind energy projects need a solid planning foundation. Exactly that is what we accomplish.



With us you develop your wind farm exactly where the wind really blows. Our well-founded project examinations, transparent energy yield determinations and reliable wind measurements are a solid basis for the future success of our customers.

As an accredited calibration laboratory for anemometers calibration, **Octopus Clan** is a reliable partner for the accurate determination of wind potential. In association with our partners, We make use of wind tunnel in which all anemometer types can be calibrated in a precise and prompt manner, reaching over 99% accuracy in wind speed measurements.

We give you sound advice in all your questions around your planned or operating wind farm. We are your competent partners from the first energy yield estimation, via the assessment of grid feeding conditions to technical acceptance tests.





PRODUCT LIST

SOLAR MODULES

The advanced cell processing technology and automated production facilities produce a highly efficient multi crystalline photovoltaic module. The conversion efficiency of the solar cells reaches up to 15%.



WIND POWER

Prostar Wind power is the world's leading supplier of small wind turbines. With installations in all 50 U.S. States and more than 90 countries and an international network, these products are undoubtedly the best available in the market today.



SOLAR BATTERIES

Batteries are the reservoir in a solar electric system. Solar batteries offer longer life and better protection from abuse than low cost automotive batteries. If you have a large system and want years of worry-free performance, use our Solar Series batteries - they are high capacity and offer excellent cycle life.



ADVERTISEMENT LIGHTS

The PECL™ light Plus ushers in a whole new era of extremely powerful multipurpose solar lighting. The patent pending design features 108 intensely bright LEDs which provide an unprecedented 175W of light easily illuminating 8' x10' sign



Solar Trackers

Tracking greatly improves the performance of your PV system. Trackers let the PV panels follow the course of the sun, so that the panel surface is always in an optimum angle to the sunrays. This guarantees highest efficiency.



INVERTER

Inverters convert DC battery power to standard AC power. They allow you to run regular AC appliances, including TVs, computers, microwaves and power tools. With an inverter your AC loads run off your batteries and they can be used any time of day or night - without a generator - and definitely during a utility power failure.



CHARGE CONTROLLER

A charge controller or regulator prevents overcharging by limiting the current flowing into the batteries. A charge controller is a power system component whose functions include regulation of solar charge current and in some cases to provide low battery protection.



WATER PUMP

Lorentz high efficiency solar water pumps are the most economical and reliable solution for all off-grid water supply demands. These solar water pumps can pump more water from as deep as in 200 meters with less solar panel using a solar tracker than any other pump in the market.



DC LIGHTS

By replacing standard incandescent lights with energy saving fluorescents or light-emitting diodes (LED's), the total lighting load can be reduced by between 50 to 90% without sacrificing illumination. We recommend the use of fluorescent lighting due to their efficiency and savings.



Solar Accessories

Accessories includes breakers and disconnects, combiner boxes and lighting arrestors etc





ENVIRONMENTAL CLEAN UP

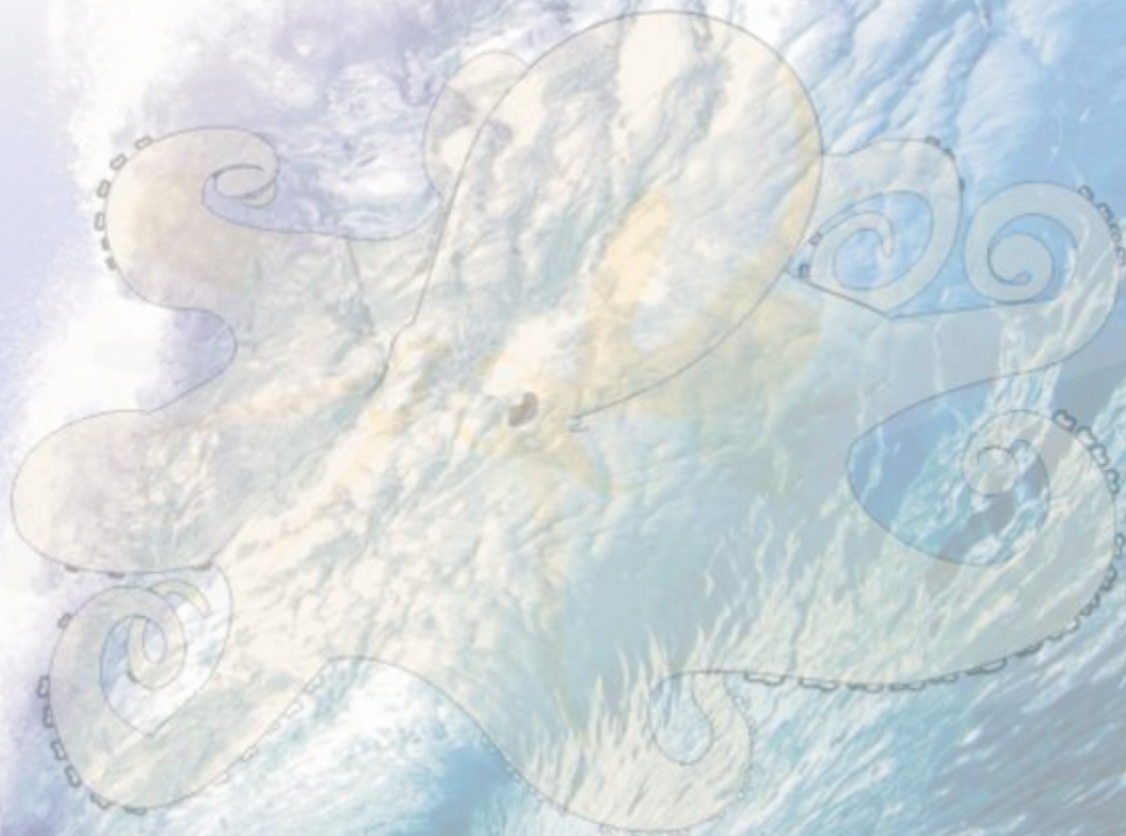

MICROMIX-INTERLOG
Nigeria Limited





CIVIL WORKS





OCTOPUS CLAN

NIGERIA LIMITED

No7, DONAU CRESCENT, OFF AMAZON STREET, MAITAMA, ABUJA.

☎ +234-929 19322, +234-803 342 6977, +234 803 704 4606

☎ +234-929 19322,

HEAD OFFICE

OCTOPUS CLAN, PLOT 349, EAGLE ISLAND

P. O. BOX 14095, PORT HARCOURT, RIVERS STATE

☎ +234-8053604123 ☎/☎ +234-8032761945

Web: www.octopusclan-ng.com

E-mail: info@octopusclan-ng.com